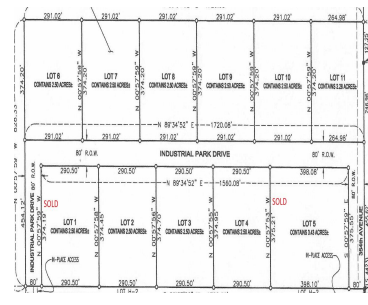
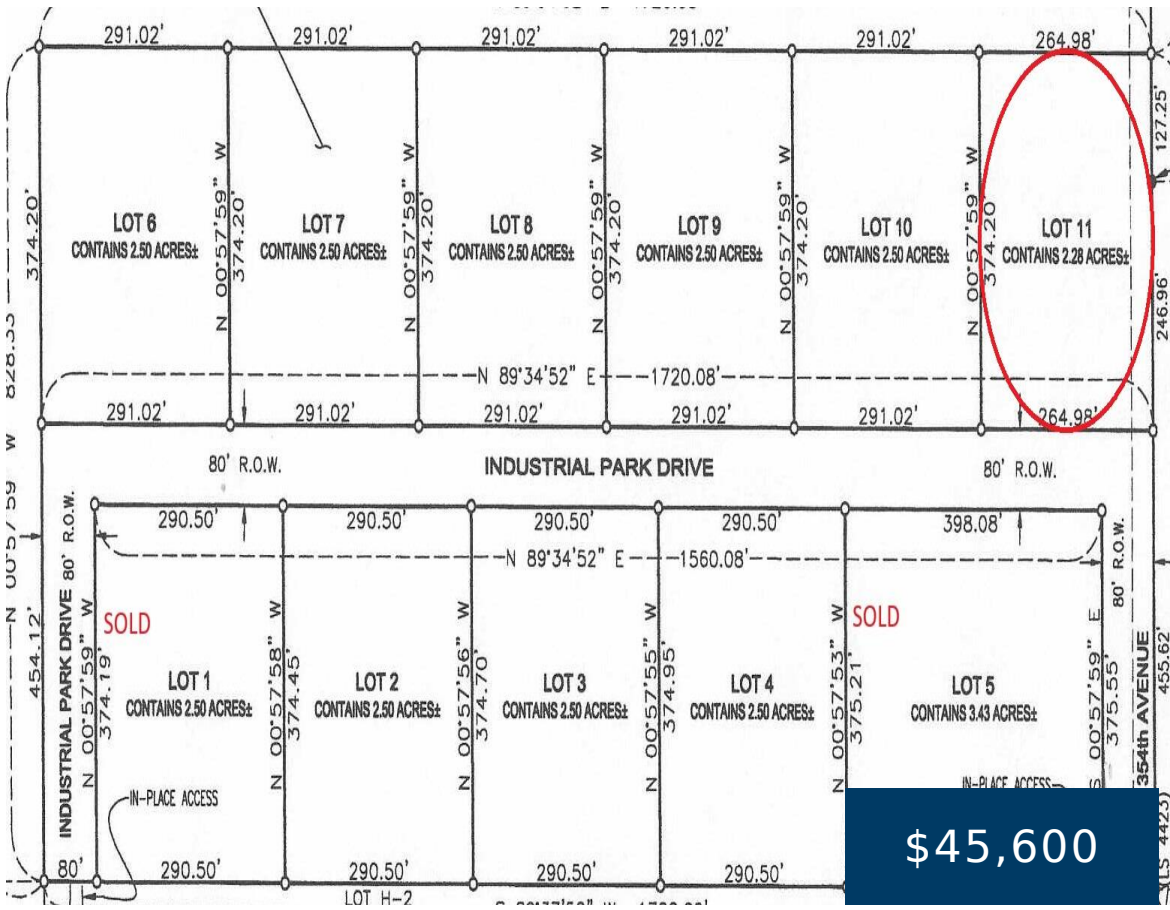


INDUSTRIAL PARK DR, FAULKTON, SD 57438

<https://jarkrealestate.com>

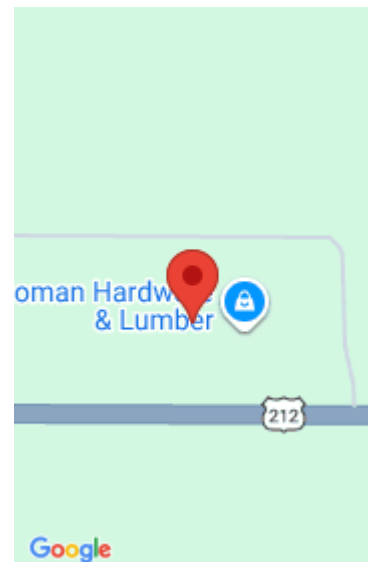


PRIME INDUSTRIAL PARK LOCATED IN A THRIVING COMMERCIAL ZONE, OFFERING VERSATILE SPACES IDEAL FOR MANUFACTURING, WAREHOUSING, LOGISTICS, AND MORE. THIS STRATEGICALLY POSITIONED PARK PROVIDES SEAMLESS ACCESS TO A MAJOR HIGHWAY TRANSPORT ROUTE, ENSURING EFFICIENT CONNECTIVITY FOR BUSINESSES. THE SITE IS DESIGNED TO ACCOMMODATE DIVERSE OPERATIONAL NEEDS. THIS INDUSTRIAL PARK IS PERFECT FOR BUSINESSES SEEKING A [...]

- 0 baths
- Commercial Sale
- Active



Tiffany Paul
eXp Realty



Basics

Category: Commercial Sale

Bathrooms: 0 baths

Lot Size Acres: 2.28 acres

County: Faulk

Status: Active

Lot size: 2.28 sq ft

Zoning: COMMERCIAL

Courtesy of

List Office Name: eXp Realty

