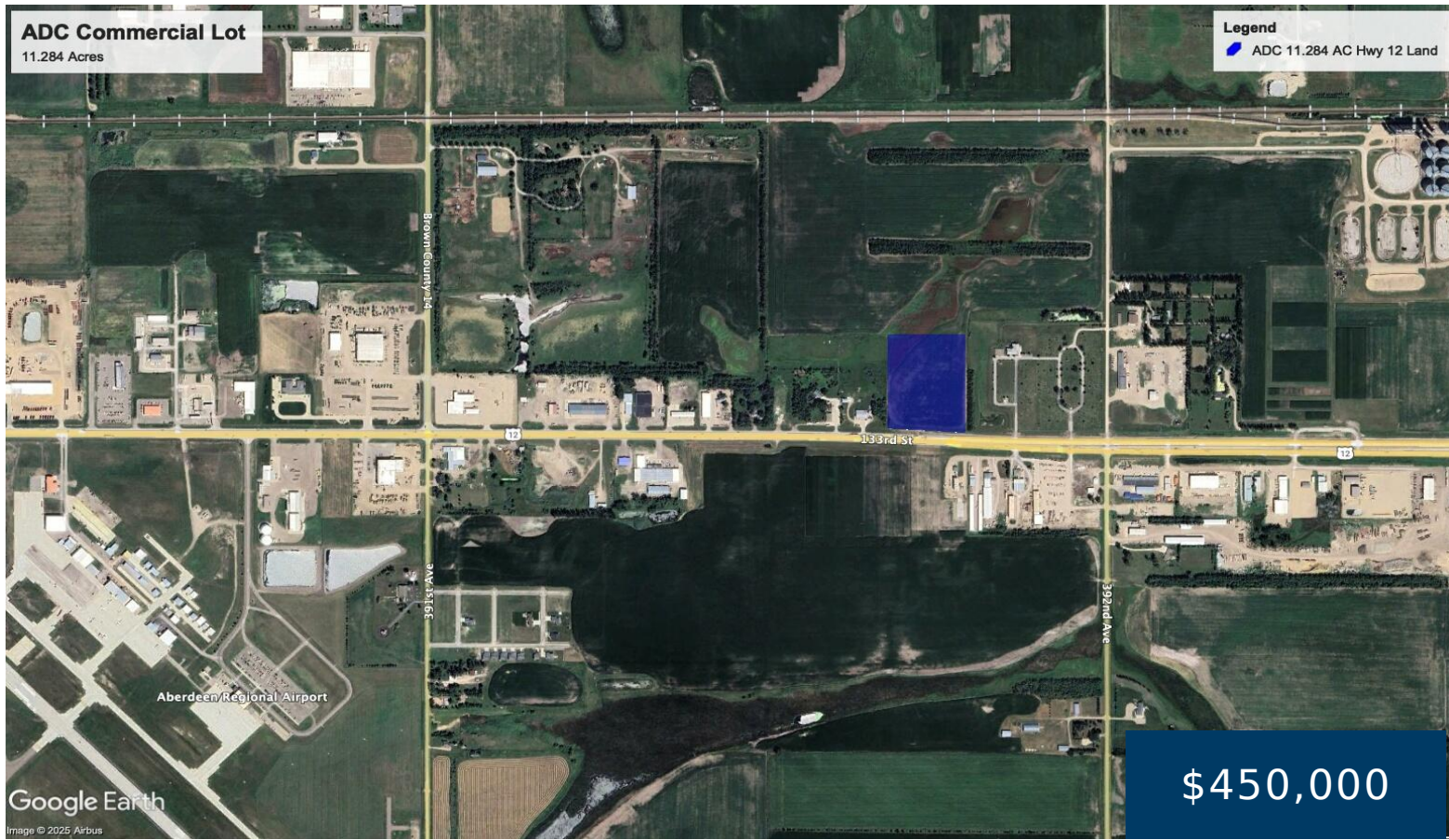


5791 U.S. 12, BATH, SD 57427

<https://jarkrealestate.com>

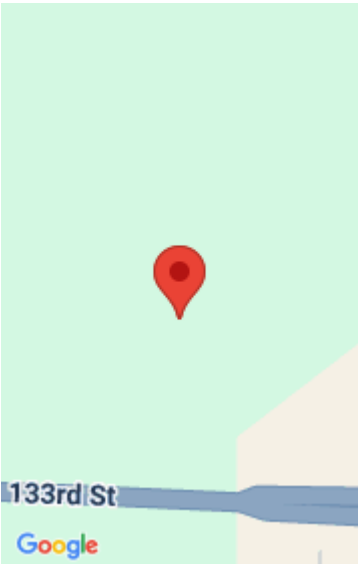


Busy, visible East Highway 12 site. Directly west of Sunset Memorial, near WEB water connection. Zoned Commercial, excellent building site. One of the last available close-in Highway 12 locations just outside of the Aberdeen City Limits. Easy access to the Aberdeen Regional Airport, & aggressively priced at 92 cents psf. The Aberdeen MLS software program [...]

- 0 baths
- Commercial Sale
- Active



Robin (Rob) Johnson
Dakota Plains Real Estate & Development



Basics

Category: Commercial Sale

Bathrooms: 0 baths

Status: Active

County: Brown

Courtesy of

List Office Name: Dakota Plains Real Estate & Development

