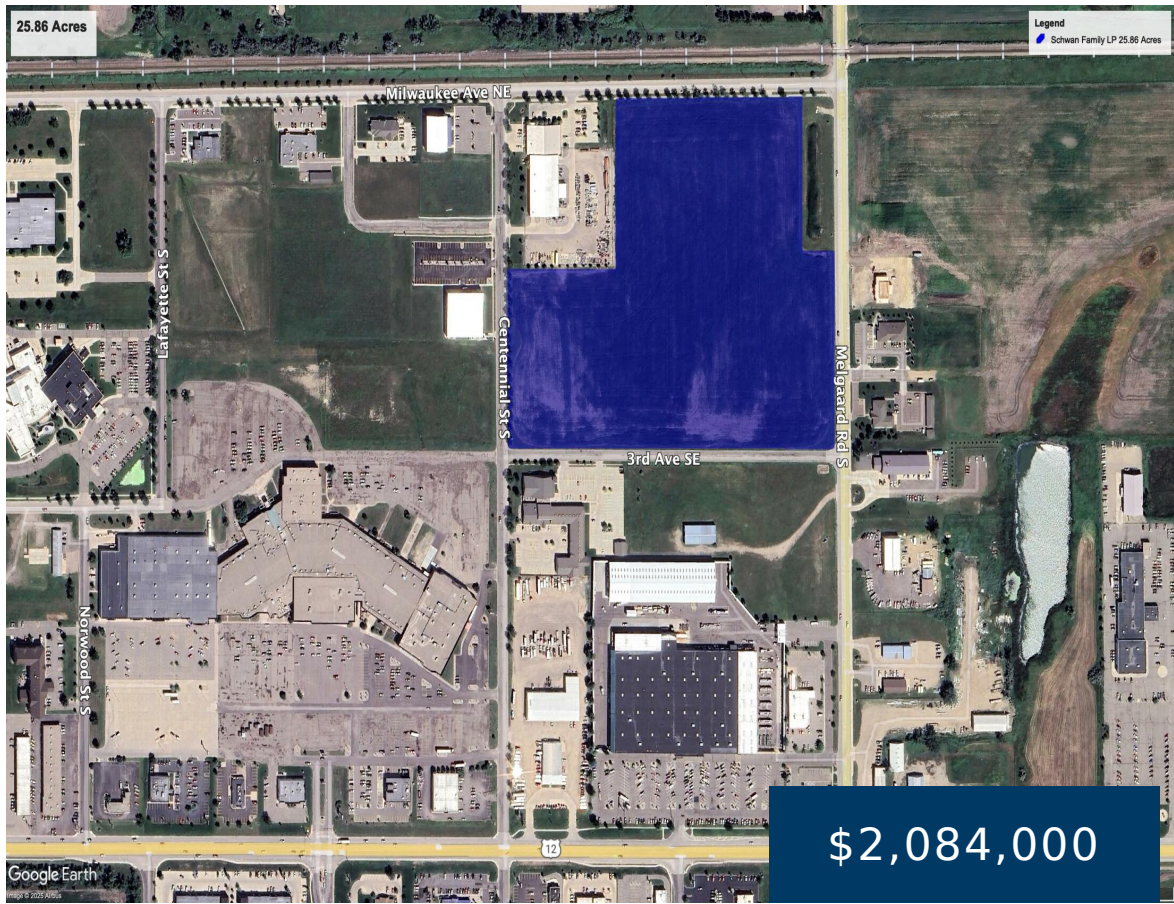


3817/3911 SE 3RD AVENUE, ABERDEEN, SD 57401

<https://jarkrealestate.com>

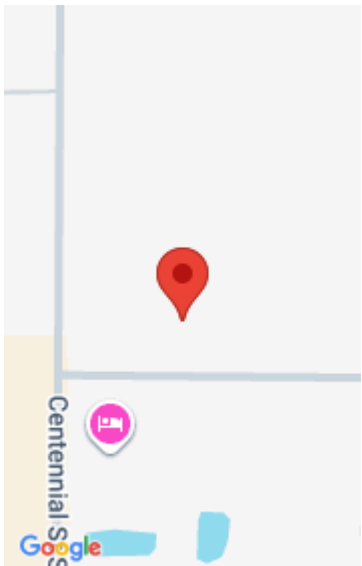


Fantastic close-in development opportunity, located just north of Menards, between 3rd Avenue and Milwaukee; bounded by S Centennial & CR19. 25.86 acres 1,125,462 sf (\$1.85psf).

- 0 baths
- Commercial Sale
- Active



Robin (Rob) Johnson
Dakota Plains Real Estate & Development



Basics

Category: Commercial Sale

Bathrooms: 0 baths

Status: Active

County: Brown

Courtesy of

List Office Name: Dakota Plains Real Estate & Development

