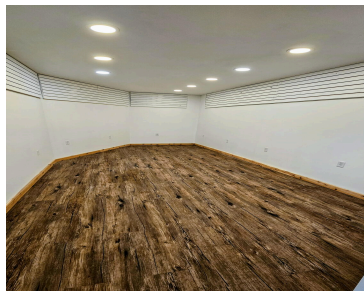
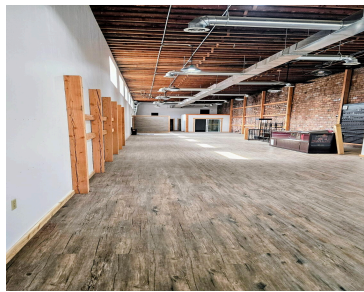
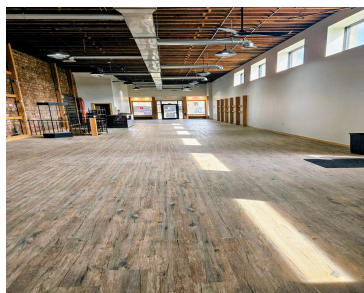


224 S MAIN STREET, ABERDEEN, SD 57401

<https://jarkrealestate.com>

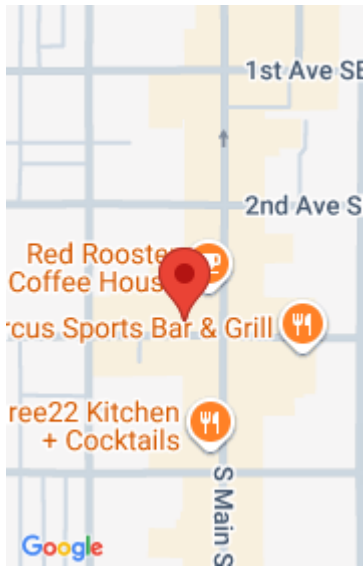


Position your business at the center of it all with this prime DT retail opportunity. Located on a high-visibility stop lighted corner on Main, this street-level space offers excellent foot traffic, strong neighboring businesses & easy accessibility. The retail storefront windows attract passerby & the open floor plan provides flexible layout options to suit a [...]

- 0 baths
- Commercial Lease
- Active



Robin (Rob) Johnson
Dakota Plains Real Estate & Development



Basics

Category: Commercial Lease

Bathrooms: 0 baths

County: Brown

Status: Active

Year built: 1904

Building Details

Building Area Total: 6670 sq ft

Courtesy of

List Office Name: Dakota Plains Real Estate & Development

