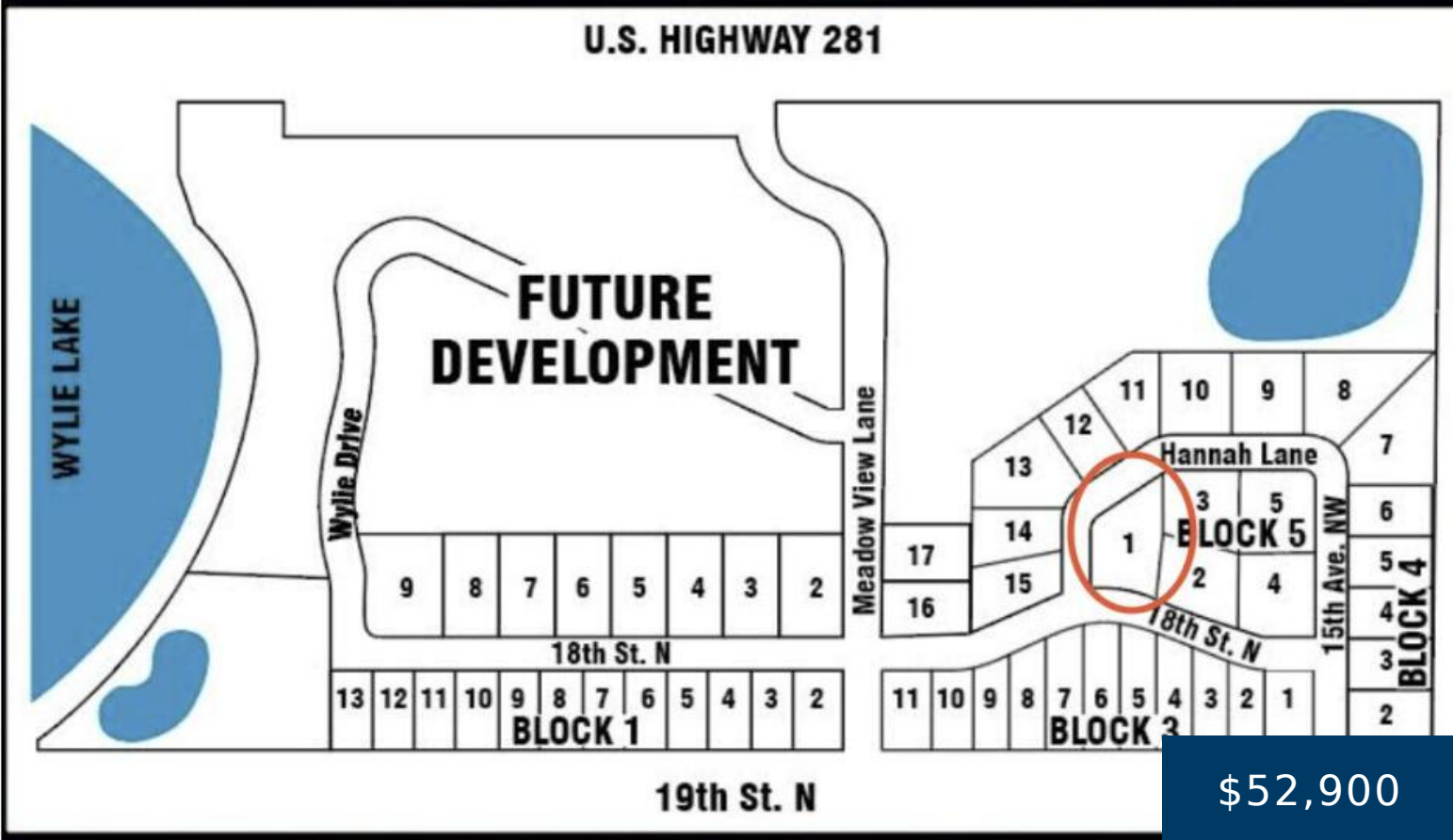


1535 HANNAH LANE, ABERDEEN, SD 57401

<https://jarkrealestate.com>

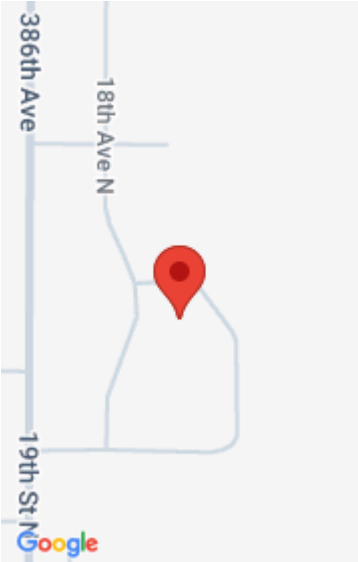


Single Family Home Lot - Don't wait on these with plenty of building movement here. Living at Wylie will have you in AWE - A subdivision unlike anything else in Aberdeen. Call an agent today - *Builders waiting on YOUR plans.* MORE LOTS ARE AVAILABLE Owner is a SD real estate licensee.

- 0 baths
- Land
- Active



Ashton Davis
Century 21 Northern Advantage



Basics

Category: Land

Bathrooms: 0 baths

Lot Size Acres: 0.49 acres

Status: Active

Lot size: 0.49 sq ft

County: Brown

Building Details

Sewer: Public Sewer

Amenities & Features

Utilities: Sewer Available, Sewer Connected, Water Available, Water Connected

WaterSource: Public

Courtesy of

List Office Name: Century 21 Northern Advantage

