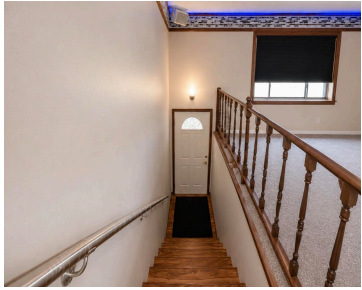


1512 1/2 S 5TH STREET, ABERDEEN, SD 57401

<https://jarkrealestate.com>



\$349,900

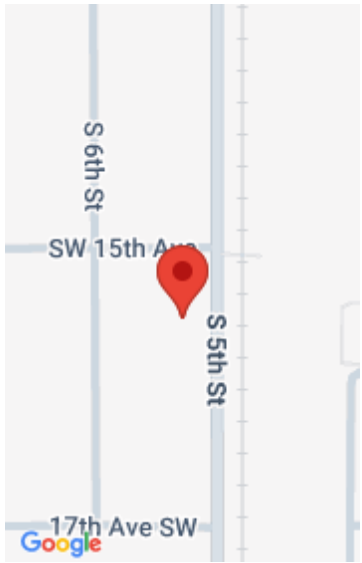


Exceptional Turnkey Duplex! Welcome to this 2,880 sqre feet property with excellent income potential in a highly desirable neighborhood with the perfect opportunity to live in one unit and rent the other-or add a solid asset to your investment portfolio! Each unit offers a spacious kitchen/living room with brand new stainless steel appliances/2 very spacious bedrooms/1 super-sized [...]

- 4 beds
- 2 baths
- Residential
- Active
- 1440 sq ft



Syranda Wipf
Century 21 Northern Advantage



Basics

Category: Residential

Bedrooms: 4 beds

Area: 1440 sq ft

County: Brown

Status: Active

Bathrooms: 2 baths

Year built: 1976

Building Details

Building Area Total: 2880 sq ft

Heating: Forced Air, Electric

Foundation Details: Poured

Basement: Full

Sewer: Public Sewer

Roof: Composition

Levels: Multi/Split

Amenities & Features

Utilities: Sewer Connected, Water Connected

WaterSource: Public

Cooling: Central Air

Association Amenities: Wdw Appts

Appliances: Dishwasher, Dryer, Microwave, Range, Cooktop, Washer, Range Hood

Courtesy of

List Office Name: Century 21 Northern Advantage

