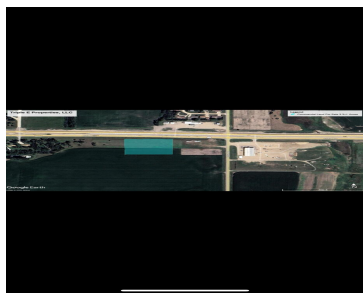
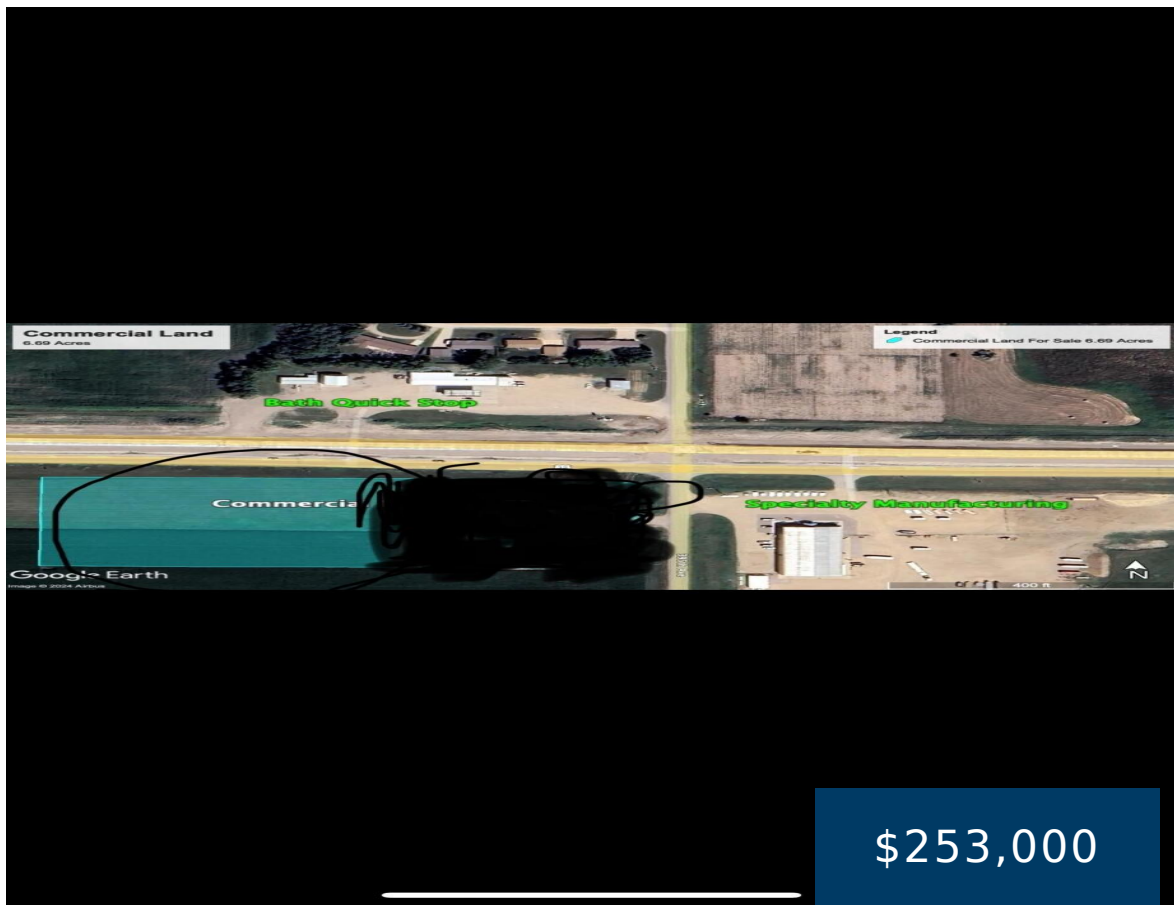


13305 395TH AVENUE, BATH, SD 57427

<https://jarkrealestate.com>

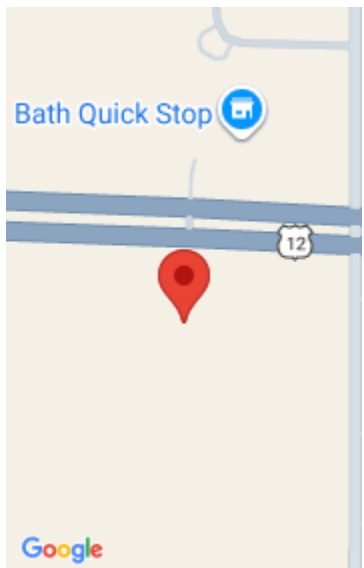


Formal address TBD . Just off the corner of highways 12 & 16 by the Bath corner

- 0 baths
- Commercial Sale
- Active



Sterling Jones
Dakota Plains Real Estate & Development



Basics

Category: Commercial Sale

Bathrooms: 0 baths

Lot Size Acres: 3.3 acres

County: Brown

Status: Active

Lot size: 3.3 sq ft

Zoning: commercial

Amenities & Features

WaterSource: Rural

Courtesy of

List Office Name: Dakota Plains Real Estate & Development

