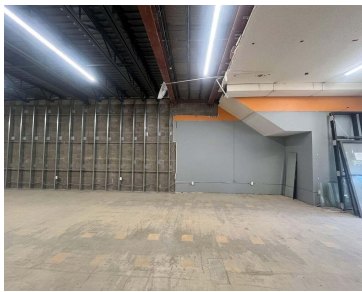
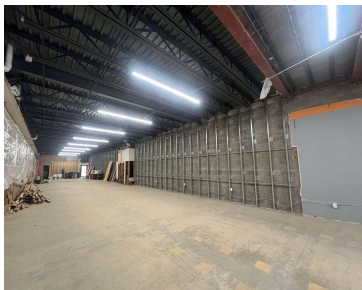


120 S MAIN STREET, ABERDEEN, SD 57401

<https://jarkrealestate.com>

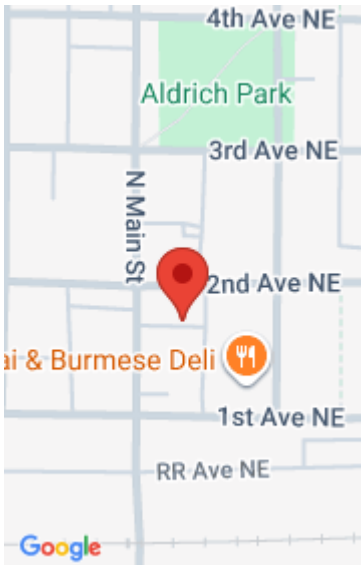


Prime downtown lease opportunity in Aberdeen! This storefront commercial space offers excellent Main Street exposure with high-visibility signage, making it ideal for businesses looking to stand out. With over 3,000 sq ft, the space is ready to be remodeled, giving you the freedom to design and customize it to fit your vision. Surrounded by established [...]

- 0 baths
- Commercial Lease
- Active



Anne Johnson
Johnson & Johnson Real Estate



Basics

Category: Commercial Lease

Bathrooms: 0 baths

County: Brown

Status: Active

Year built: 1888

Building Details

Building Area Total: 3250 sq ft

Courtesy of

List Office Name: Johnson & Johnson Real Estate

