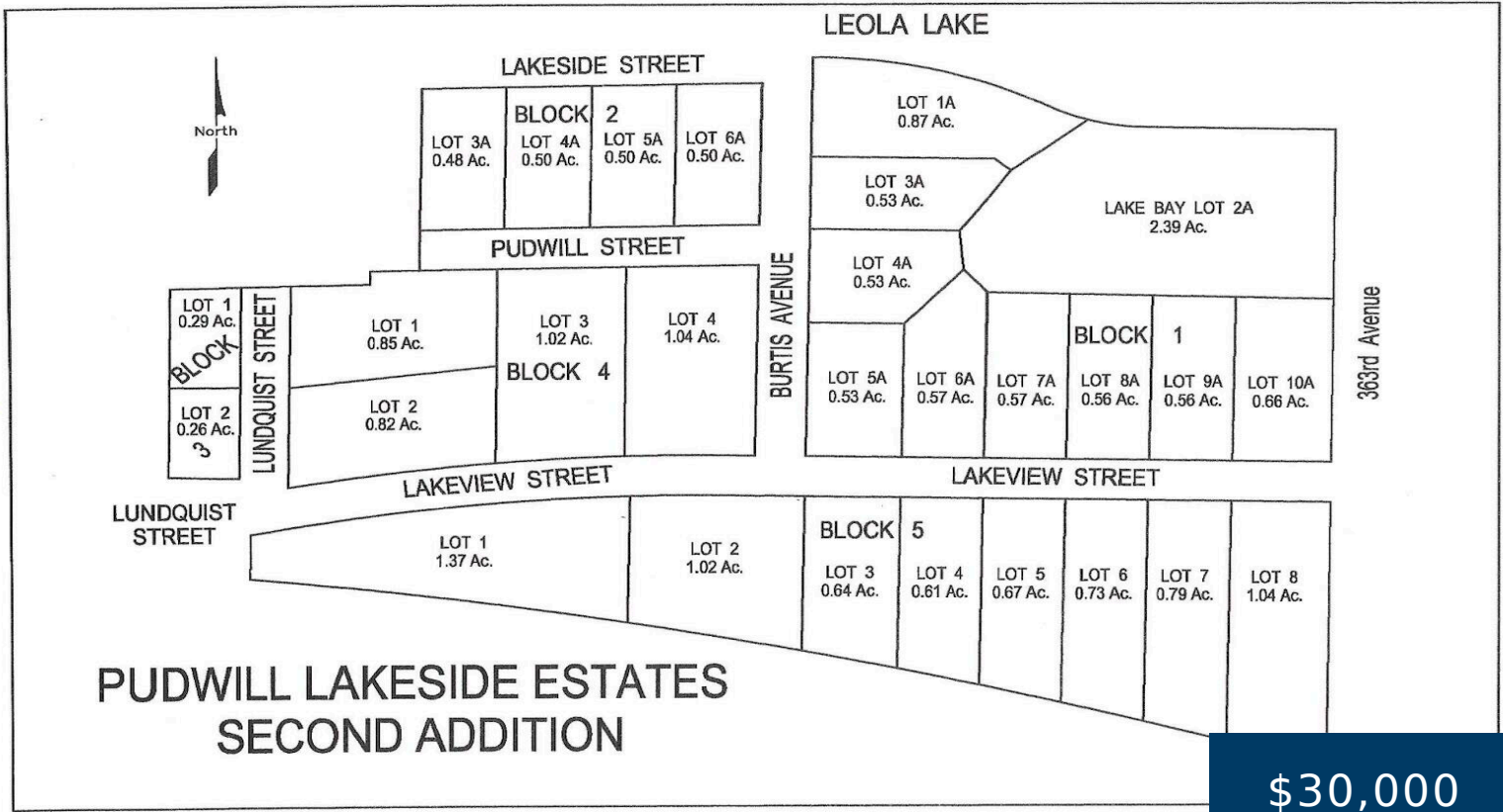


1120 PUDWILL STREET, LEOLA, SD 57456

<https://jarkrealestate.com>

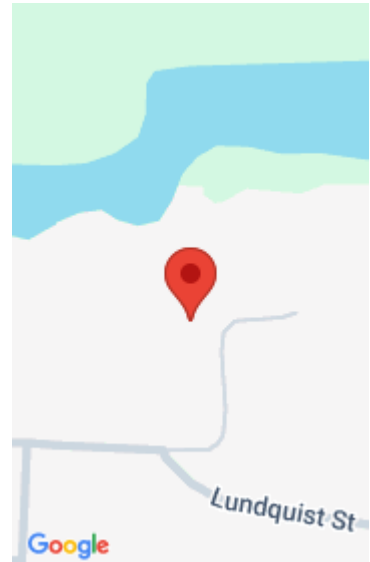


Welcome to Pudwill Lakeside Estates Second Addition, where peaceful living meets the beauty of lakeside life. These spacious lots offer the perfect setting for your dream home or relaxing vacation retreat — a place where you can unwind, recharge, and reconnect with nature. Wake up to breathtaking sunrises and end your day with unforgettable sunsets [...]

- 0 baths
- Land
- Active



Trent Osborne
Century 21 Northern Advantage



Basics

Category: Land

Bathrooms: 0 baths

Lot Size Acres: 0.5 acres

Status: Active

Lot size: 0.5 sq ft

County: McPherson

Courtesy of

List Office Name: Century 21 Northern Advantage

