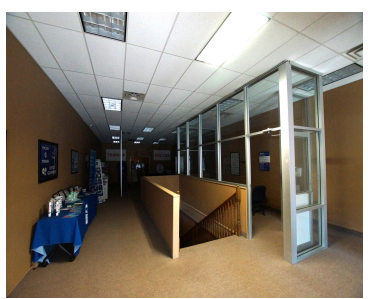


108 & 112 S MAIN STREET, ABERDEEN, SD 57401

<https://jarkrealestate.com>

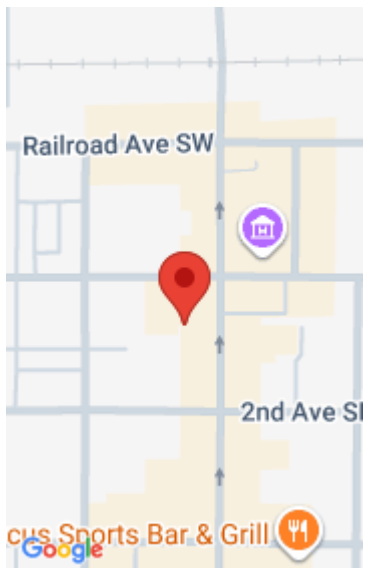


Looking for a Downtown location? This is the one! With 16,972 sq ft, the possibilities are endless. Don't miss this opportunity to own a piece of Historic Downtown Aberdeen! New roof November 2024.

- 0 baths
- Commercial Sale
- Active



Jonathan Webb
FIRST PREMIER REALTY, LLC



Basics

Category: Commercial Sale

Bathrooms: 0 baths

County: Brown

Status: Active

Year built: 1895

Building Details

Building Area Total: 16972 sq ft

Courtesy of

List Office Name: FIRST PREMIER REALTY, LLC

